



Dri-FIT Cotton/Poly Long Sleeve Tee

Rib knit collar

Taped neck and shoulders

Contrast heat transfer Swoosh logo at left sleeve



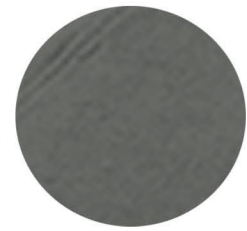
NKBQ5230

Product Features:

- 7.9-oz, 54/40/6 cotton/polyester/organic cotton Dri-FIT sweat wicking jersey
- Double needle stitching throughout

Adult Sizes: XS-4XL

Icons/Fabric Features:



Available Colours and PMS Colours

Textile fabric colours are subject to dye lot variation and will not be exact match to print pantone reference

BLACK

WHITE

ANTHRACITE

COLLEGE NAVY



Nike products may not be sold without embellishment.

NKBQ5230 - Nike Dri-FIT Cotton/Poly Long Sleeve Tee

GARMENT MEASUREMENTS

Size	XS	S	M	L	XL	2XL	3XL	4XL
Chest - Half Measure	17"	18 1/2"	20 1/8"	21 5/8"	23 5/8"	25 5/8"	27 1/2"	29 3/4"
Chest - Full Measure	34"	37"	40 1/4"	43 1/4"	47 1/4"	51 1/4"	55"	59 1/2"
Body Length from HPS	27"	27 3/8"	27 3/4"	28 1/2"	29 3/8"	30 1/8"	30 7/8"	31 3/4"
Sleeve Length - CB	35 1/2"	36"	36 2/4"	37"	37 3/4"	38 1/2"	39 1/4"	40"

Finished measurements in inches. Refer to "How to Measure" guide for detailed information on measurement instructions.

ADULT General Sizing Guide

Size	XS	S	M	L	XL	2XL	3XL	4XL
Chest	30"-32"	34"-36"	38"-40"	42"-44"	46"-48"	50"-52"	54"-55"	56"-57"
Waist	26"-29"	29"-32"	32"-35"	35"-38"	38"-41"	41"-44"	44"-47"	47"-50"
Sleeve Length-CB	31"-32"	32"-33 1/2"	34"-35"	35"-36"	36"-37"	37"-38"	38"-39"	38 1/2"-39"

