



Triblend Scoop Neck Relaxed Ladies' Tee



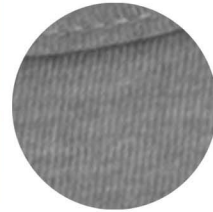
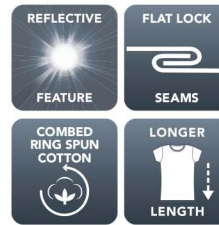
KOI8036L

Product Features:

- 5.7-oz, 50/25/25 polyester/cotton/rayon
- Combed and ring spun cotton
- Soft 30 single triblend jersey

Ladies' sizes: XS-4XL

Icons/Fabric Features:



Available Colours and PMS Colours

Textile fabric colours are subject to dye lot variation and will not be exact match to print pantone reference

WHITE FLECK TRIBLEND

GREY TRIBLEND

CHARCOAL TRIBLEND



No PMS



No PMS



No PMS

Due to the nature of the triblend fabric, special care must be taken throughout the decoration process.

KOI8036L - KOI® Triblend Scoop Neck Relaxed Ladies' Tee

GARMENT MEASUREMENTS

Size	XS	S	M	L	XL	2XL	3XL	4XL
Chest - <i>Half Measure</i>	16 1/2"	17 1/2"	18 1/2"	20"	21 1/2"	23"	25"	27"
Chest - <i>Full Measure</i>	33"	35"	37"	40"	43"	46"	50"	54"
Body Length from HPS (Front)	26 1/2"	27"	27 1/2"	28 1/2"	29 1/2"	30 1/2"	31"	31 1/2"
Body Length from HPS (Back)	28 1/2"	29"	29 1/2"	30 1/2"	31 1/2"	32 1/2"	33"	33 1/2"
Sleeve Length-CB	14"	14 1/2"	15"	15 5/8"	16 1/4"	16 7/8"	17 5/8"	18 3/8"

Finished measurements in inches. Refer to "How to Measure" guide for detailed information on measurement instructions.

LADIES' General Sizing Guide

Size	XS	S	M	L	XL	2XL	3XL	4XL
Numeric Size	2	4-6	8-10	12-14	16	18-20	22	24
Bust	32"-34"	35"-36"	37"-38"	39"-41"	42"-44"	45"-47"	48"-51"	52"-55"
Waist	24"-25"	26"-27"	28"-30"	30"-32"	33"-35"	36"-38"	40"-42"	42"-44"
Hip	33"-35"	35"-37"	37"-39"	39"-41"	42"-44"	45"-47"	48"-50"	50"-52"
Sleeve Length-CB	30"-30 1/2"	30 1/2"-31"	31 1/2"-32"	32 1/2"-33"	33 1/2"-34"	34"-34 1/2"	34 1/2"-35"	34 1/2"-35"



PRINTING INSTRUCTIONS FOR TRIBLEND FABRICS

Due to the nature of Triblend fabric (*polyester + cotton + rayon blend*), special care must be taken throughout the decoration process. Here are some tips to effectively decorate our Triblend products.

Garment temperature must not exceed 320°F or 160°C. Exceeding this temperature will cause the fabric to shrink, become wavy or cause dye migration.

Dryer temperature and belt speeds must be changed accordingly for Triblend fabric. Recommended belt time for Triblend is 70 seconds from the beginning to end of the dryer, or around a speed of 19.

- If flashing these garments, do not exceed 1-2 seconds. Anything longer may damage the fabric as stated above.

Screen Printing: These garments require the use of poly inks that cure at a lower temperature. A Dyno Grey base blocker on all colours and a second white base blocker on all dark colours are recommended. Please consult your ink supplier for more information.

- Triblend fabrics may require a longer cooling time than 100% Cotton fabrics. Avoid overlap of garments and screenprint/heat transfer until the garments are cooled. Failure to cool the fabric prior to stacking into a printer's fold may cause the fabric and applied ink to stick together.

Heat Transfers: Poly mark heat transfers may need to be created with an anti-migration layer in the design. Inks used in printing paper design needs to be darker than the base fabric or colour may migrate with the fabric colour resulting in a bleeding effect.

- If you heat press these garments, you must adjust the time, temperature and pressure. Failure to do so may damage the fabric as stated above.
- A test sample run is recommended, especially if you have a large order or if your printer does not specialize in printing on Triblend fabrics.