



Element Full Zip Hooded Fleece



Unlined hood with no drawstring

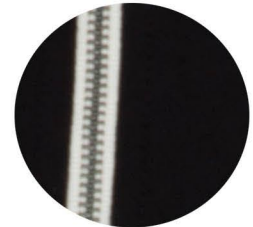
KOI2049

Product Features:

- 9.8 oz, 60/40 cotton/polyester lightweight fleece
- Combed and RING SPUN cotton
- Ultra soft 32 single cotton

Adult sizes: XS-4XL

Icons/Fabric Features:



Antique silver zipper with contrast zipper tape

Set-in sleeves

Pouch pockets

Rib knit cuffs and waistband

KOI® flag logo at bottom hem

Available Colours and PMS Colours

Textile fabric colours are subject to dye lot variation and will not be exact match to print pantone reference

ONYX



Black 6C

KOI2049 - KOI® Element Full Zip Hooded Fleece

GARMENT MEASUREMENTS

Size	XS	S	M	L	XL	2XL	3XL	4XL
Chest - <i>Half Measure</i>	17 3/4"	19 1/4"	20 3/4"	22 1/4"	23 3/4"	25 1/4"	27 1/4"	29 1/4"
Chest - <i>Full Measure</i>	35 1/2"	38 1/2"	41 1/2"	44 1/2"	47 1/2"	50 1/2"	54 1/2"	58 1/2"
Body Length from HPS	28 1/2"	29"	29 1/2"	30"	31"	32"	32 1/2"	33"
Sleeve Length-CB	34 3/4"	35 1/2"	36 1/4"	37"	37 3/4"	38 1/2"	39 1/2"	40 1/2"

Finished measurements in inches. Refer to "How to Measure" guide for detailed information on measurement instructions.

ADULT General Sizing Guide

Size	XS	S	M	L	XL	2XL	3XL	4XL
Chest	30"-32"	34"-36"	38"-40"	42"-44"	46"-48"	50"-52"	54"-55"	56"-57"
Waist	26"-29"	29"-32"	32"-35"	35"-38"	38"-41"	41"-44"	44"-47"	47"-50"
Sleeve Length-CB	31"-32"	32"-33 1/2"	34"-35"	35"-36"	36"-37"	37"-38"	38"-39"	38 1/2"-39"

