



eurospun®



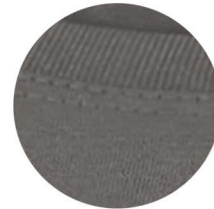
ATC8003L

Product Features:

- 6.8-oz, 100% combed and ring spun cotton
- Ultra soft 30 single jersey
- Double needle cover stitch at sleeve and bottom hem

Ladies' sizes: XS-4XL

Icons/Fabric Features:



Available Colours and PMS Colours

Textile fabric colours are subject to dye lot variation and will not be exact match to print pantone reference



ATC8003L - ATC™ / EUROSPUN® Ring Spun 3/4 Sleeve Ladies' Tee

GARMENT MEASUREMENTS

| Size | XS | S | M | L | XL | 2XL | 3XL | 4XL |
|-----------------------------|---------|---------|---------|---------|---------|---------|---------|---------|
| Chest - Half Measure | 15 1/4" | 16 1/4" | 17 1/4" | 18 3/4" | 20 1/4" | 21 3/4" | 23 3/4" | 25 3/4" |
| Chest - Full Measure | 30 1/2" | 32 1/2" | 34 1/2" | 37 1/2" | 40 1/2" | 43 1/2" | 47 1/2" | 51 1/2" |
| Body Length from HPS | 26" | 26 1/2" | 27" | 28" | 29" | 30" | 30 1/2" | 31" |
| Sleeve Length-CB | 21 3/4" | 22 1/4" | 22 3/4" | 23 1/2" | 24 1/4" | 25" | 25 3/4" | 26 1/2" |

Finished measurements in inches. Refer to "How to Measure" guide for detailed information on measurement instructions.

LADIES' General Sizing Guide

| Size | XS | S | M | L | XL | 2XL | 3XL | 4XL |
|-------------------------|-------------|-------------|-------------|-------------|-------------|-------------|-------------|-------------|
| Numeric Size | 2 | 4-6 | 8-10 | 12-14 | 16 | 18-20 | 22 | 24 |
| Bust | 32"-34" | 35"-36" | 37"-38" | 39"-41" | 42"-44" | 45"-47" | 48"-51" | 52"-55" |
| Waist | 24"-25" | 26"-27" | 28"-30" | 30"-32" | 33"-35" | 36"-38" | 40"-42" | 42"-44" |
| Hip | 33"-35" | 35"-37" | 37"-39" | 39"-41" | 42"-44" | 45"-47" | 48"-50" | 50"-52" |
| Sleeve Length-CB | 30"-30 1/2" | 30 1/2"-31" | 31 1/2"-32" | 32 1/2"-33" | 33 1/2"-34" | 34"-34 1/2" | 34 1/2"-35" | 34 1/2"-35" |

